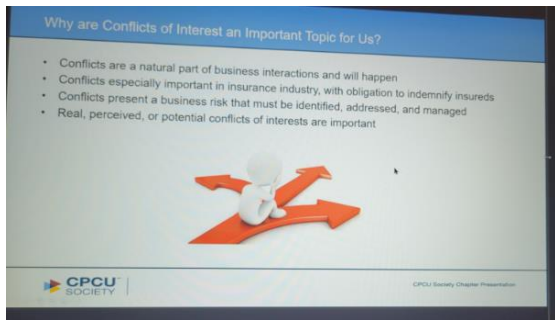




Recent Events

March – Ethics Month – Our chapter hosted a Conflicts of Interest in P&C Insurance discussion on March 24th. This discussion was focused on identifying and resolving ethical issues involved with policyholder or client interests conflict and was led by our board members Al Edwards- Claims Advocate Manager with Ansay & Associates and Randy Guse- Trial Attorney & Sharehold at Otjen Law Firm S.C.



D&I Discussion Lunch & Learn – On April 21st we were joined by Martha Lester, Chair of the Risk Management & Insurance Program at Madison College (formerly Madison Area Technical College-MATC); and her students and Associate Dean Melissa Perez as they discussed the diversity, equity and inclusion focus at Madison College. The discussion highlighted the College’s partnerships with the Urban League of Greater Madison and other local agencies, such as Wisconsin Public Service and CapSpecialty, who work with the College to broaden the program’s reach to underrepresented groups of student recruits who may not otherwise have access to this type of college education.

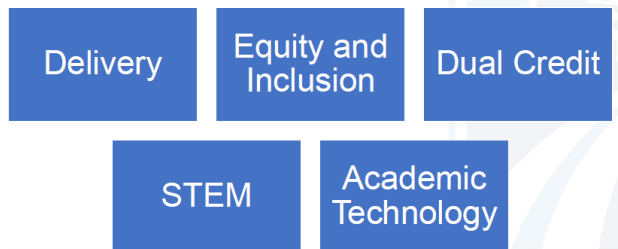
We also announced our new scholarship of \$1000 scholarship to Madison College for the Risk Management & Insurance Program for the Fall 2022 semester!

April – Board Volunteering – Your Chapter Board volunteered at Friedens Food Pantries on April 20th. We sorted food that is donated by various grocery stores in the Milwaukee area that will be provided to families in need. For more information visit:

<https://friedenspantry.org/>

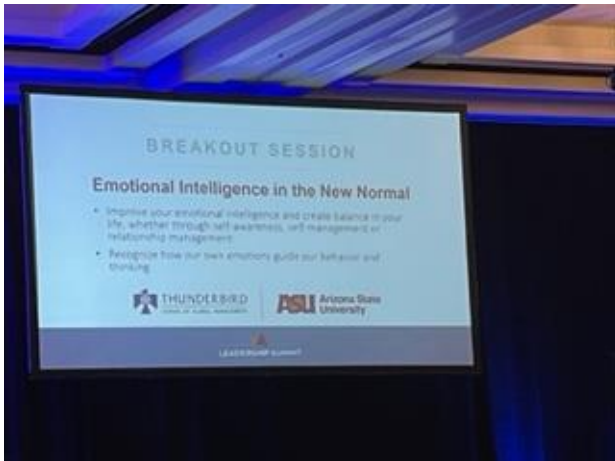


Priorities



UW Madison Risk & Insurance Spring Banquet – The University held a virtual banquet for their scholarship recipients & sponsors on April 26th. We again provided a \$1000 scholarship to this program as we have in years past.

Leadership Summit – Every year the National Society hosts a leadership summit in the spring and this year it was IN-PERSON in Las Vegas! Our chapter VP, Rebecca Jeske was able to attend and take part in various seminars. See below some of the great breakout sessions she attended!



Upcoming Events

June Brewers Tailgate & Game – Thursday, June 2nd.
 The Greater MKE CPCU Chapter will be cheering on the Brewers as they take on the San Diego Padres with a 6:40 first pitch. We hope to tailgate before the game as well.



Save The Date!

This year's All Industry Day will be held on Friday, November 4th. Stay tuned for more details as they become available!

HEADLINES

The 2021 Circle of Excellence chapter qualifiers have just been announced.

The CPCU Society's Circle of Excellence Recognition Program awards each chapter for its efforts to achieve benchmarks in chapter performance. The program provides chapter leaders, and committee and task force chairmen, with structure and guidance to achieve strategic, chapter and member goals. Chapters can earn Platinum, Gold or Silver recognition by achieving key initiatives of the Society's strategic plan.

The Greater Milwaukee Chapter has obtained the highest level!



Congratulations 2021 Chapter Circle of Excellence Qualifiers!

Platinum Circle of Excellence			
• Alamo	• Central Illinois	• Dallas	• New Jersey
• Allegheny	• Central Jersey	• District of Columbia	• New York
• Arizona	• Central Massachusetts	• Eastern North Carolina	• North Central Florida
• Atlanta	• Chicago-Northwest Suburban	• Greater Milwaukee	• North Florida
• Bayou	• Chicago-West Suburban	• Houston	• Orange Empire
• Bermuda	• Cincinnati	• Iowa	• Presque Isle
• Boston	• Cleveland	• Mid-Michigan	• Richmond
• Buffalo	• Colorado	• Mid-Tennessee	• Sacramento Valley
• California El Camino	• Connecticut	• Nebraska	• Valley Forge
• Cedar Valley	• Cypress Gardens		

Gold Circle of Excellence
 Silver Circle of Excellence

FAQs!

What do my yearly CPCU dues go towards?

The Greater Milwaukee Chapter member's dues are \$260; \$200 goes to the National Society and \$60 goes to our local Chapter. The dues are used to obtain speakers for local chapter events, allow board members to attend national conventions, provide many of the expenses incurred for I-Day and also allow the chapter to host social events at free or discounted costs.

Can I attend a meeting or event if I don't have my CPCU or am not in "good standing"?

YES – all insurance professionals are welcome to attend our events!

Reminder!

As CPCUs we are committed to ongoing professional education as part of the CPCU Code of Conduct. To be in "Good Standing" CPCUs need to earn 24 credit hours every two years, and complete the reporting process.

Qualifying activities

THE INSTITUTES	THE INSTITUTES CPCU SOCIETY	CEU	ADDITIONAL ACTIVITIES
<ul style="list-style-type: none">ExamsOnline coursesSMART® practice examsLeadership Education	<ul style="list-style-type: none">The Institutes CPCU Society Knowledge CenterEducational eventsWebinars	<ul style="list-style-type: none">Any state licensing CE activity	<ul style="list-style-type: none">Practice-oriented contentEmployer trainingEducation from colleges, universities or other credentialing providersAny state licensing CE activity

Visit the websites below for more information:

<https://web.theinstitutes.org/continuing-education-cpcus>

Provides your Progress Tracker for CE:

https://www.cpcusociety.org/Public/Education/CE_CPCU/Public/Education/CPCU_in_Good_Standing.aspx?hkey=73f7095c-797c-4a81-b554-cc55e1dcd61b

Complete the Reporting Process
Don't miss this important step! Even if credits are auto reported, you must log into the Reporting Tool to verify all reported activities. Your reporting process is not complete until you confirm. The \$189 Reporting fee is waived for CPCU Society members
Confirm your activities in the Reporting Tool
→

Get Involved

<https://greatermilwaukee.cpcusociety.org/meetings-events>

2022 Chapter Leaders

Jodi Doro, President

Jodi_doro@secura.net

Tyler Christopherson, Past President

Rebecca Jeske, President-Elect

Sarah Stadler, Treasurer

Andrew Chevalier, Secretary

Paul Hanley, Director

Randy Guse, Director

Sam Guizzetti, Director & Community Outreach Chair

Alan Edwards, Education Chair

Josh Thomas, New Designee Chair

Sara Ploch, Web Master Chair

Jennifer Moore, Community Outreach Chair